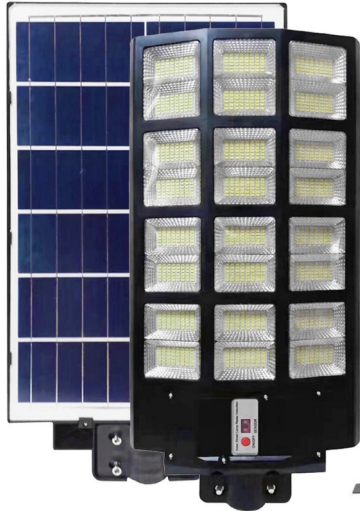


SAL1000W



Technical Specifications	
Model	SAL1000W
Shell Attributes	IP65, Anti Aging, Anti Corrosion, Anti-UV
Housing Material	ABS
Lense Material	Optical Polycarbonate
Solar Panel Material	Polycrystalline Silicon
Beam Angle	120
Input Voltage	6V 12W
Luminous Efficiency	>100lm/w
Luminous Flux	100,000
LED Chips	800SMD
Charge Time	6-8 Hours
Power Supply	Solar
LED Output	1000w
Color Rendering Index	RA \geq 70
Color Temp	3000k-6500k
Run Time on Full Charge	12/36 Hours
Sensor	Occupancy + Dusk to Dawn
Remote Control	Yes
Lighting Mode	Multiple
Working Temp	-40 to 135°
Lifespan (hours)	50,000
Weight (lbs)	15
Size (in)	16*14*3
Certificate	CE, ROHS, ISO9001
Install Height	12-22ft
Warranty	1 yr